

GroHomeManager-X

All the information you need!

Growatt officially launches a new product --- GroHomeManager-X.

We offer two main application scenarios:

- 1) Energy management solution for small-scale parallel system
- 2) Wireless meter for single inverter

Please kindly review this document, including compatible devices.

We are confident that the GroHomeManager-X will deliver a completely new experience for your residential system.



GroHomeManager-X is designed to simplify installation and optimize monitoring. It can be compatible with single-phase, three-phase and micro-inverter, including the following models:

Single-phase model: MIN 2500-6000TL-XH2

Three-phase model: MOD 3-15KTL3-HU

Micro-inverter model: NEO 600-1000M-X (LoRa), NEO 1600-2500M-X2 (LoRa)

For installers & end-users, it offers three core advantages:

- 1) Effortless deployment: Eliminating the need for traditional RS485 communication cables, the RFStick-X2 and GroHomeManager-X adopt wireless LoRa communication and can be configured via the ShinePhone APP in just 5 minutes.
- 2) Real-time oversight: It supports real-time tracking of system power flow, delivering essential data to facilitate effective system management.
- 3) Broad compatibility: It is compatible with single-phase inverter, three-phase inverter, and micro-inverter, significantly simplifying the selection of energy management devices.

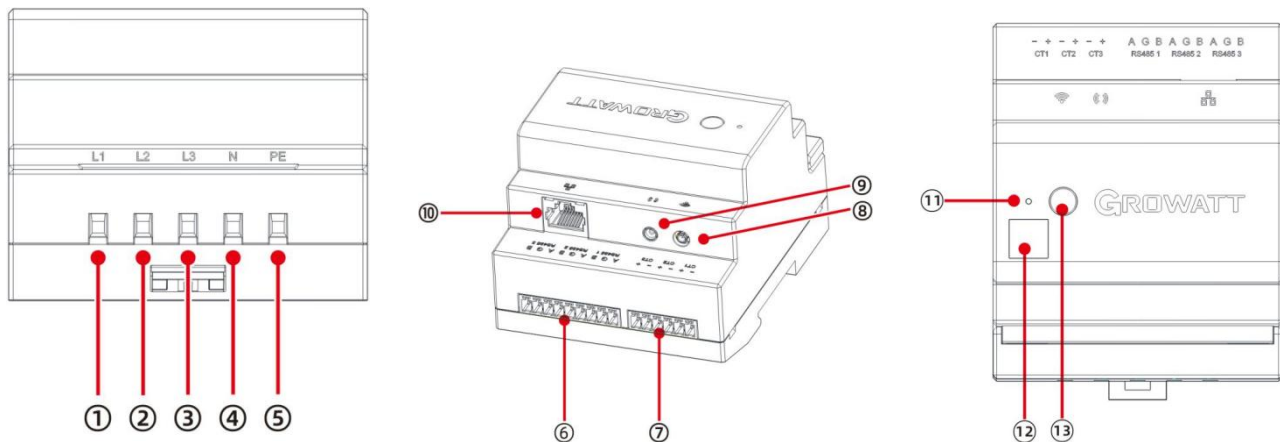


GroHomeManager-X



ShineRFStick-X2

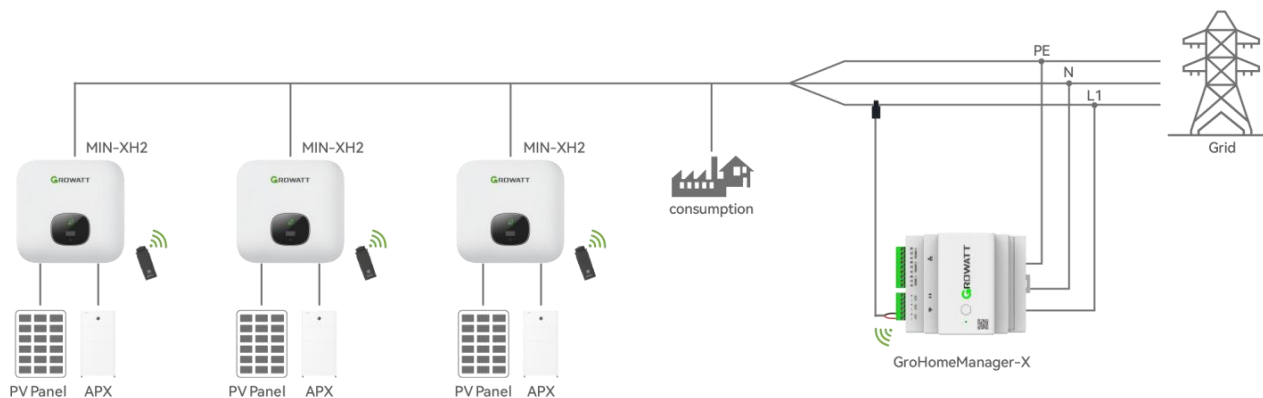
* The GroHomeManager-X is installed at the grid connection point (e.g., a meter), with the ShineRFStick-X2 plugged into the inverter's USB port. Each inverter requires one ShineRFStick-X2 (to be ordered separately), except for the micro-inverters (LoRa version).



No.	Identification	Note
① ② ③	AC power port	Connect according to the grid type
④	Neutral line port	Connect according to the grid type
⑤	PE line port	/
⑥	3-Channel RS485	For installation scenarios unsuitable for wireless LoRa*
⑦	3-Channel CT interface	Compatible with CT quick-connect terminal; 100A/40mA
⑧	WiFi antenna port	Use this port when accessing the internet via Wi-Fi
⑨	RF antenna port	Enhances the LoRa signal
⑩	Ethernet port	Use this port when accessing the internet via LAN
⑪	Indicator light	For specific meanings, please refer to the guide
⑫	Product QR code	/
⑬	Key button	For specific operations, please refer to the guide

* When the installation site is prone to LoRa signal degradation—Such as when multiple walls (vertical or horizontal) separate the GroHomeManager-X from the inverter—a wired RS485 connection is recommended as an alternative for reliable communication. This article primarily focuses on wireless methods.

• Energy management device for parallel system



Model	Function	Parallel limits
MIN 2500-6000TL-XH2	Energy management (like export limitation)	3
MOD 3-15KTL3-HU		
NEO 600-1000M-X (LoRa)		6
NEO 1600-2500M-X2 (LoRa)		

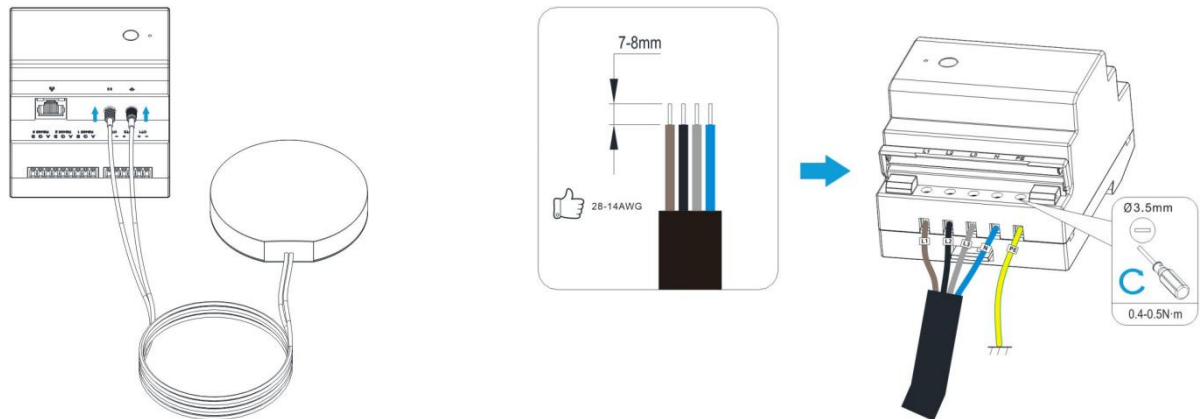
1) Antenna installation

Insert the two terminals of the disk antenna into their corresponding antenna sockets to ensure a secure, reliable connection. This guarantees stable signal transmission and proper antenna operation.

2) AC power port connection (according to the grid type)

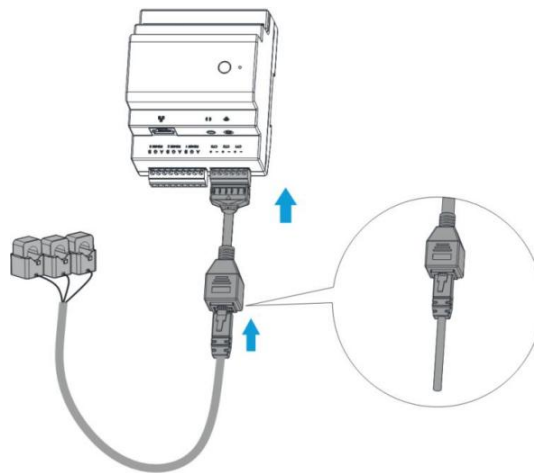
When connecting a 28-14 AWG cable to the AC power port:

- ① Strip approximately 7-8 mm of insulation from the cable end.
- ② Fully insert the exposed conductor into the corresponding terminal to ensure secure contact.
- ③ Tighten the terminal bolt to secure the connection.



3) CT installation (according to the grid type)

Connect the RJ45 terminal on the CT accessory to the CT quick-connect terminal. Ensure the CT is oriented from the "K" (Grid side) to the "L" (Load side). For MIN-XH2 single-phase systems, only one CT connection is required.



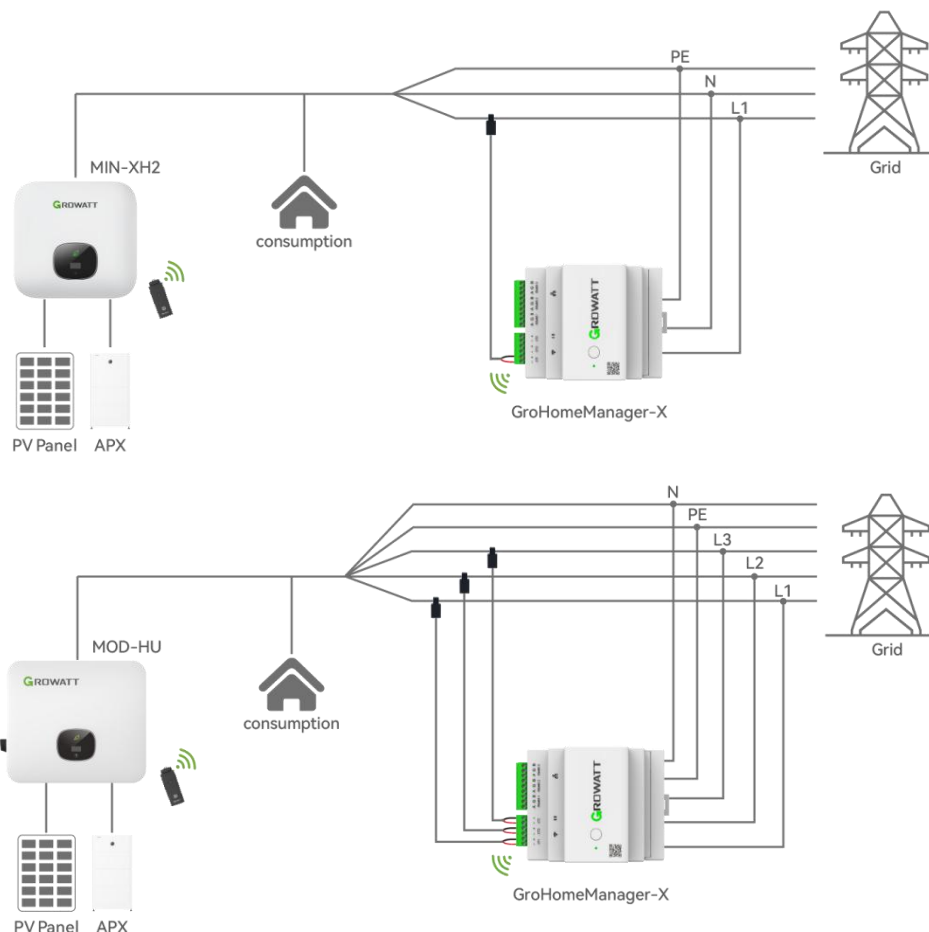
4) ShineRFStick-X2 installation*

Connect the ShineRFStick-X2 to the inverter's USB port:

- ① Ensure the triangle mark is facing forward.
- ② Press the lock and rotate clockwise until it is fully tightened.

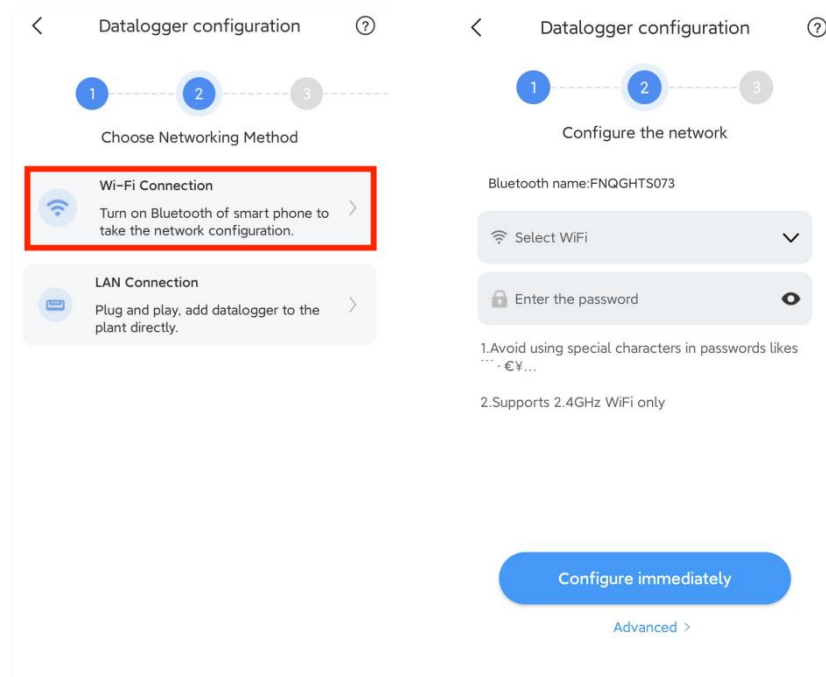
* Micro-inverters do not require this step.

• Wireless meter for single inverter

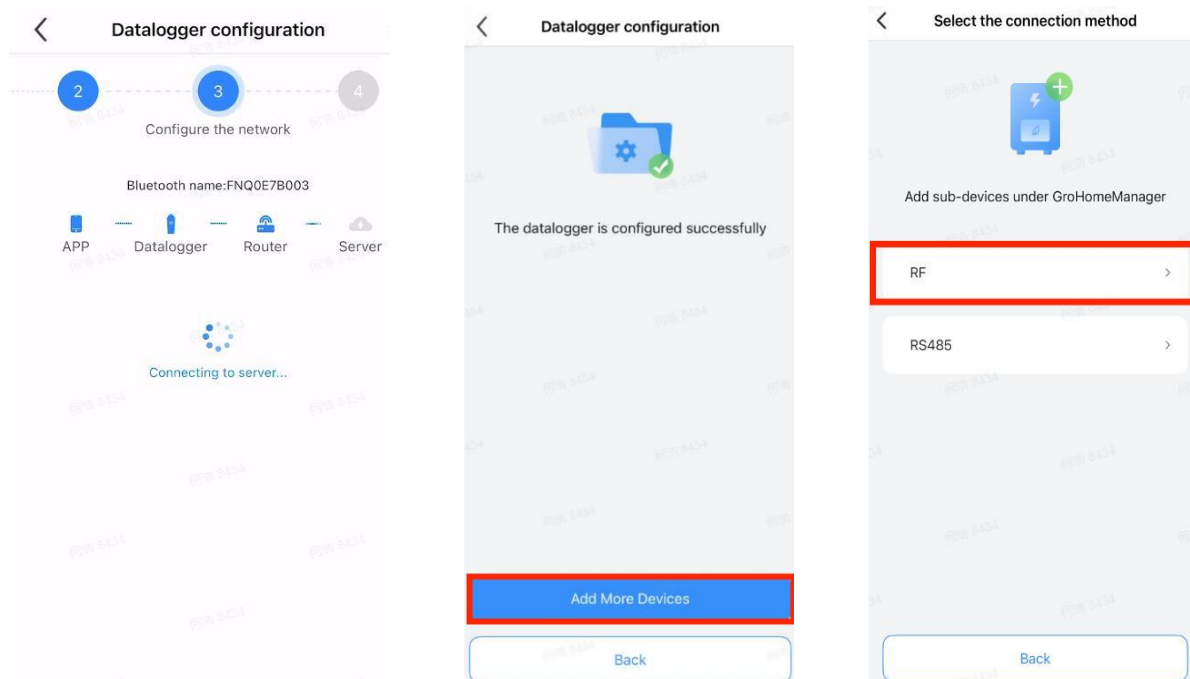


The above is a brief installation overview. For detailed instructions, please refer to the installation guide. Device configuration settings are outlined below:

- 1) Please download the ShinePhone APP and create a plant first.
- 2) Tap "Plant", then the "+" icon, and select "Add datalogger".
- 3) Scan the provided QR code.
- 4) Select "Wi-Fi Connection" and follow the prompts to enter Bluetooth pairing mode (steady yellow for indicator) to connect with your phone.
- 5) Select your home Wi-Fi network and enter the password.
- 6) Complete the setup to establish a connection with your home router.



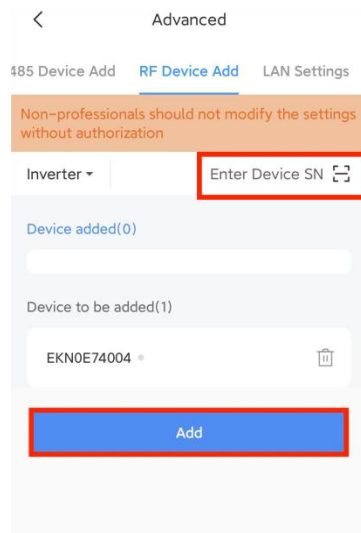
After network configuration, an interface for adding more devices will appear.



Put both devices into RF pairing mode:

GroHomeManager-X: Double-click its key button (Yellow light blinks slowly)

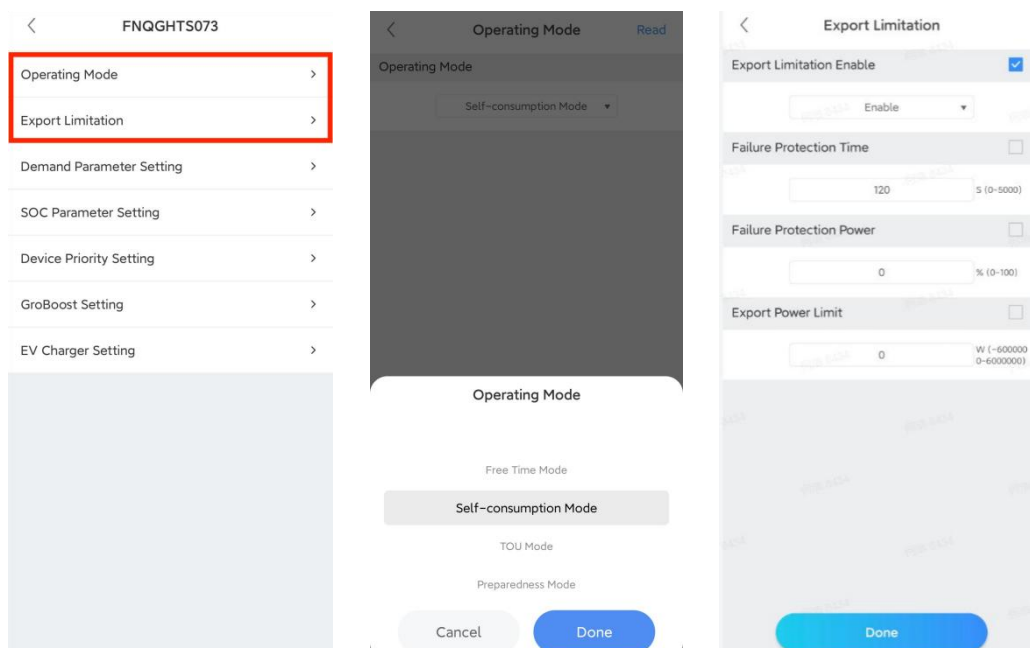
ShineRFStick-X2: Double-click its bottom button (Yellow light blinks slowly)



Click the “Add” button, GroHomeManager-X will actively pair with the RF slave device.

• Work mode and export limitation settings *

ShinePhone APP: Power station page > click the "+" > datalogger list



* When operating as a wireless meter for a single inverter, the work mode or export limitation parameters must be configured on the GroHomeManager-X.